

Cox Creek Restoration Photos



Figure 1. Cox Creek Confluence vegetation photo point December 1, 2016

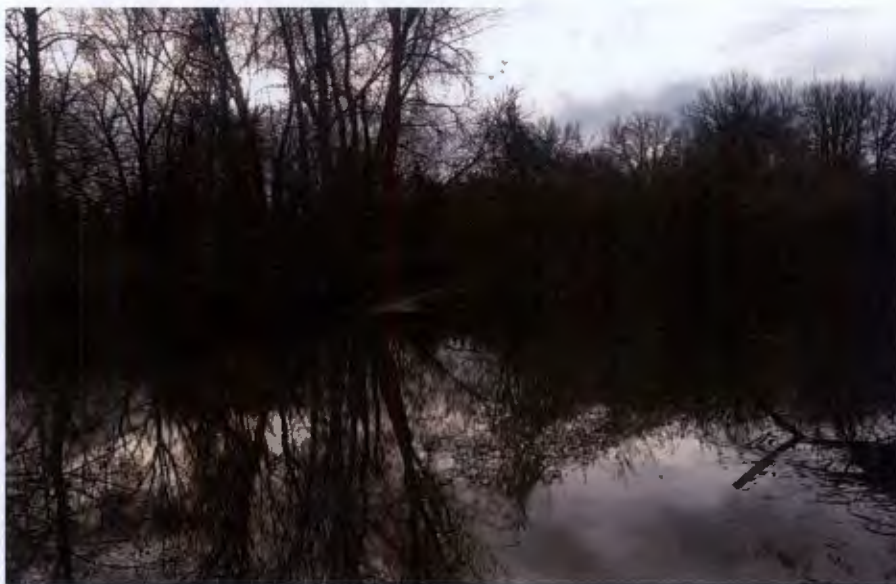


Figure 2. Cox Creek Confluence vegetation photo point December 1, 2016
High flows overtopped the culvert at Cox creek, making it impossible to collect photo points beyond this point

Cox Creek Restoration Photos



Figure 1. Cox Creek Confluence vegetation photo point #1- BEFORE. Post flail mow, pre reed canarygrass spray, Summer 2012.



Figure 2. Cox Creek Confluence vegetation photo point#1 - AFTER. Post site prep, planting, and 2 seasons of plant establishment, Summer 2014.



Figure 3. Cox Creek Confluence Vegetation Photo Point #1 – 4th season of plant establishment Summer 2016



Figure 4. Cox Creek Vegetation Photo Point #1- 4th season of plant establishment Winter 2016 (High water overtopping culvert made it impossible to reach other side of creek)



Figure 5. Cox Creek Vegetation Photo Point #2—4th season of plant establishment Summer 2016.



Figure 6. Cox Creek Revegetation Photo Point #2—4th season of plant establishment Winter 2016.

