

2011 Events



110 guests at Annual Fundraiser



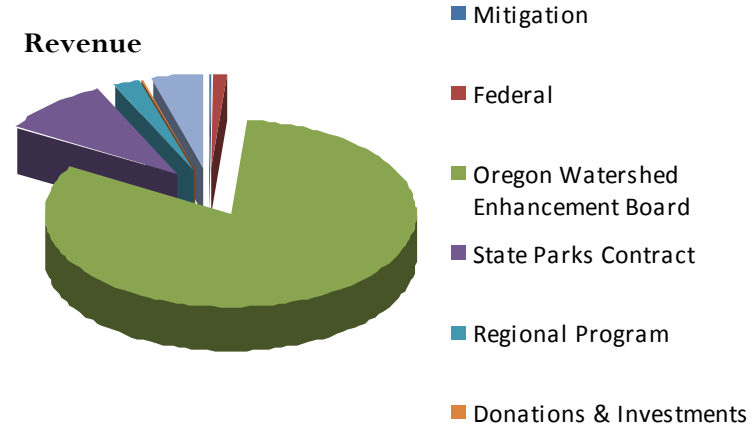
117 at Fish Passage Celebration



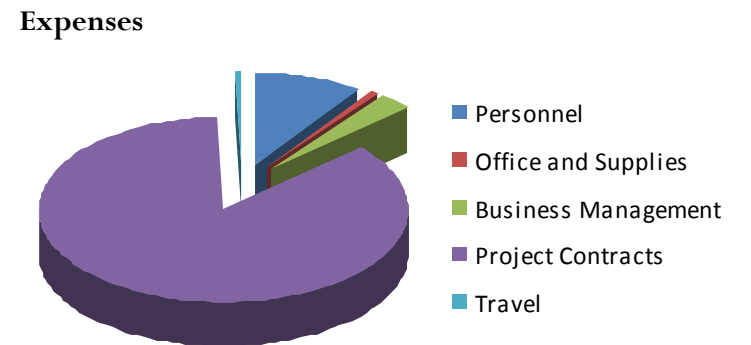
26 hikers at Tidbit Wildflower Hike

2011 Financial Summary

Revenue		
Mitigation	\$ 7,344	0.4%
Federal	20,501	1.1%
OWEB	1,520,189	80.2%
State Parks Contract	178,413	9.4%
Regional Program	43,147	2.3%
Donations & Investments	6,008	0.3%
Fiscal Administration	81,839	4.3%
Private Foundation	38,337	2.0%
Total	\$ 1,895,778	



Expenses		
Personnel	\$ 180,581	9.4%
Office & Supplies	18,025	0.9%
Business Management	58,687	3.0%
Project Contracts	1,664,292	86.2%
Travel	8,732	0.5%
Total	(\$ 1,930,315)	



Calapooia Watershed Council
 PO Box 844 / 136 Spaulding Ave
 Brownsville, OR 97327
 phone: 541 466 3493
 email: calapooia@peak.org
 website: www.calapooia.org

Mission
Providing opportunities for membership to cooperate in promoting and sustaining the health of the watershed and its communities



2011 Program Highlights



Japanese knotweed infestation

- 1. Noxious Weed Control Program, 2006-present**
 Partnership with Weyerhaeuser and US Forest Service for false brome treatment
 1.7 acres treated for false brome, using 52 gallons of product
 13.5 miles of river inventoried, mapped and treated for false brome
 15 knotwood sites treated
 72 miles of knotwood infestation almost controlled along Calapooia mainstem after 5 years of treatment

- 2. Brush Creek Sub-basin Planning and Restoration, 2006-present**
 Stream habitat planning with 5 landowners
 2.5 stream miles of planned large wood habitat placement



Reach 3 instream habitat treatment

- 3. Calapooia-Santiam Collaboration and Model Watershed Program, 2007-present**
 - 3a. Courtney Creek Sub-basin Planning and Restoration**
 7 acres riparian revegetation in progress with 3 landowners
 2,850 linear feet of livestock exclusion fencing with 1 landowner
 Working with landowners and conservation partners to continue habitat restoration and conservation.
 - 3b. Middle Reach Calapooia Planning and Restoration - Reach 2**
 13 acres riparian revegetation in progress with 4 landowners
 350 linear feet of livestock exclusion fencing with 1 landowner
 1+ miles of instream habitat projects with 3 landowners
 - 3c. Middle Reach Calapooia Planning and Restoration - Reach 3**
 20 acres riparian revegetation in progress with 2 landowners
 2,870 linear feet of livestock exclusion fencing with 1 landowner
 2+ miles of instream habitat and floodplain connectivity and enhancements with 5 landowners



Dam removal technical team

- 4. Sodom / Shearer Dam Fish Passage Improvements & Flow Management, 2008-2011**
 2 dams removed
 30 landowners over 3 years involved during planning process
 4 landowners involved in implementation
 3,200 willow installed on the 1.5 acre riparian area of Sodom Channel
 5,000 bare-root plants to be installed on the 2.5 acre property winter 2012
 1,500 linear feet of habitat restored along Sodom Channel

- 5. Albany Floodplain Enhancements, 2010-present**

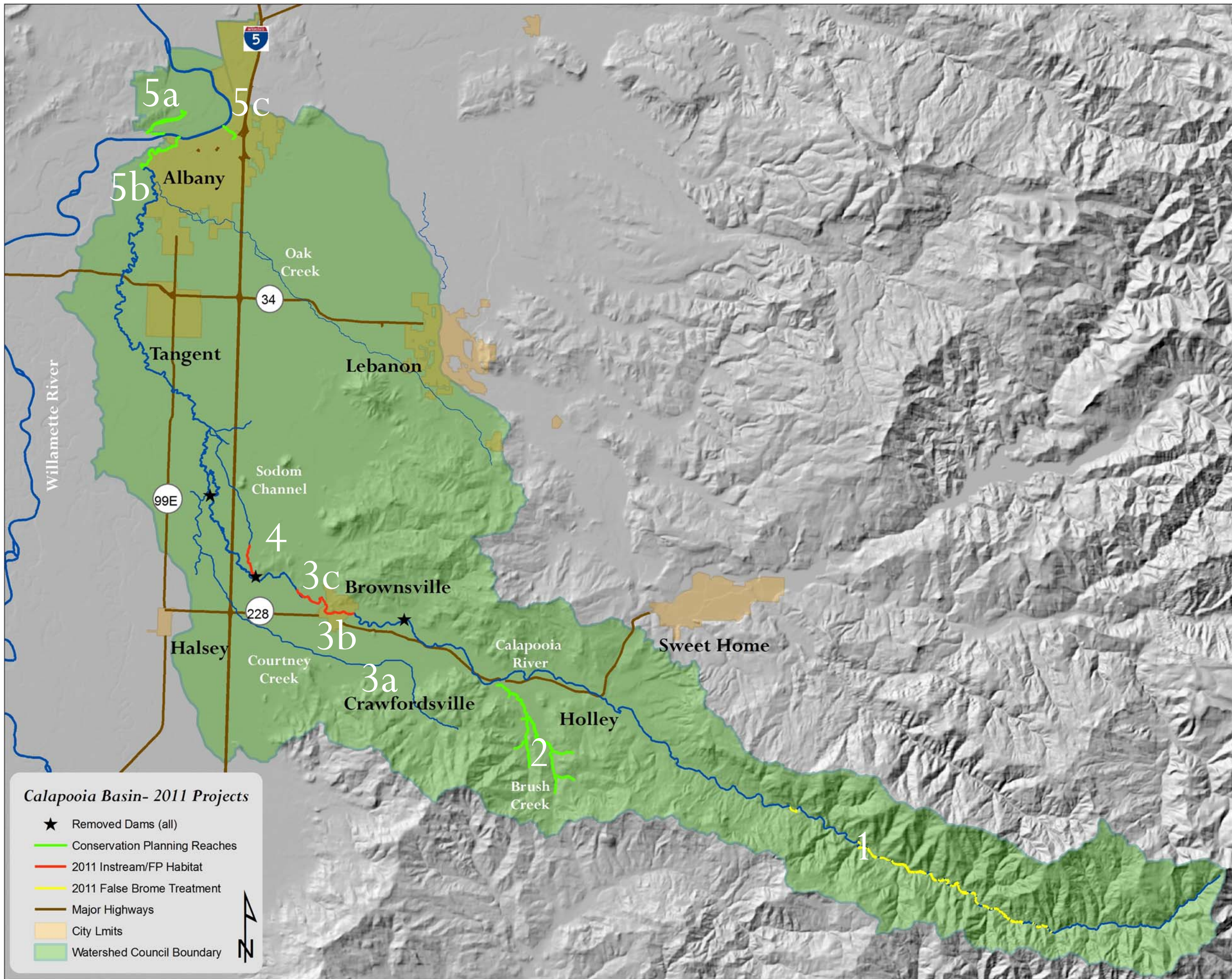
- 5a. Thornton Lake Conservation Planning**
 Planning led by Willamette Stewardship Team - Albany Reach
 30+ landowners participating in educational workshops

- 5b. Calapooia-Willamette Confluence Planning Area**
 1.5 miles of conservation planning on lower Calapooia
 4 landowners and City of Albany

- 5c. Cox Creek Confluence Restoration Planning Area**
 25 acre planning area
 1 landowner and City of Albany



Surveying the Willamette River



1
Noxious Weed Control Program



2
Brush Creek Sub-basin



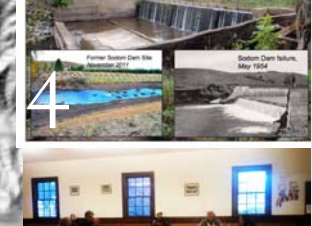
3a
Courtney Creek Sub-basin



3b
Middle Reach Calapooia - R 2



3c
Middle Reach Calapooia - R 3



4
Sodom / Shearer Fish Passage



5a
Thornton Lake Conservation



5b
Calapooia - Willamette



5c
Cox Creek Confluence

